

# The Arts of the Warrior Classes



Shiro shoin of  
Nishi Hongan-ji  
showing the  
location of the  
Tokonoma.



Arrangements for a reception room display 'Zashiki Kazari Emaiki' Muromachi Period. 1552.  
Handscroll. Ink and colour on paper. Private Collection.





Tea objects  
on staggered  
shelves in  
the Shiro  
shoin of  
Nishi  
Hongan-ji  
est. 1602,  
Kyoto.





Writing  
alcove in  
Nishi  
Hongan-ji  
est. 1602,  
Kyoto.



Bamboo in the  
Four Seasons,  
Hanging Scroll.  
China. Yuan  
Period. C. Mid  
14th century.  
One of a pair of  
hanging scrolls  
(Summer/Spring).  
Cleveland  
Museum, Ohio,  
USA



Bamboo in the Four  
Seasons, Hanging  
Scroll. China. Yuan  
Period. C. Mid 14th  
century. One of a  
pair of hanging  
scrolls  
(winter/autumn)  
Indemitsu Museum,  
Tokyo, Japan.

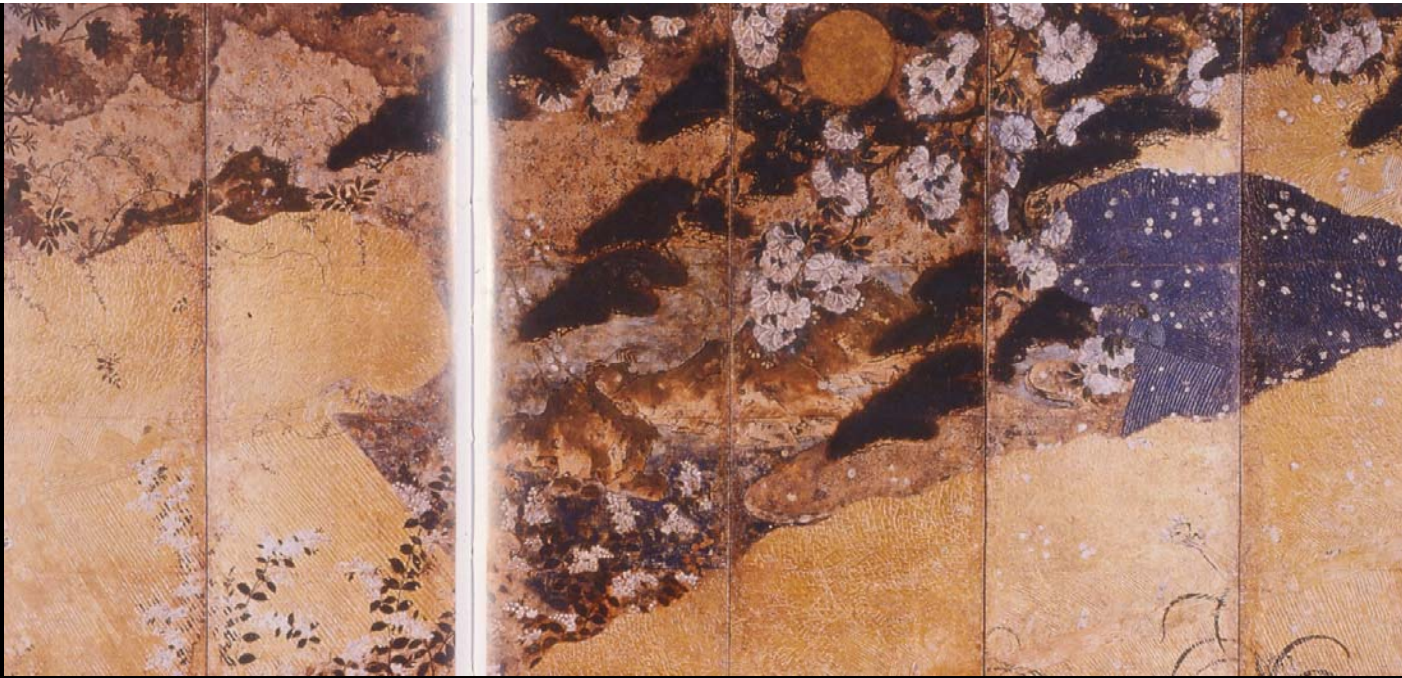




Arrangements for a reception room display 'Zashiki Kazari Emaiki' Muromachi Period. 1552. Handscroll. Ink and colour on paper. Private Collection.



Kyoto Nijo Castle. The Honmaru Palace . Room of the Four Seasons.



The Four Seasons with the Sun and the Moon. Late Muromachi to Momoyama period. 16<sup>th</sup> century. One of a pair of six panel folding screens. Ink, colour, gold and silver on paper.







Flaring Bronze Flower vase.  
China. Yuan period,  
(1279 – 1368) Private Collection.



Three tiered octagonal box food container with camellia and birds. Momoyama period to early Edo period. 17<sup>th</sup> century. Red and gold lacquer with litharge painting.



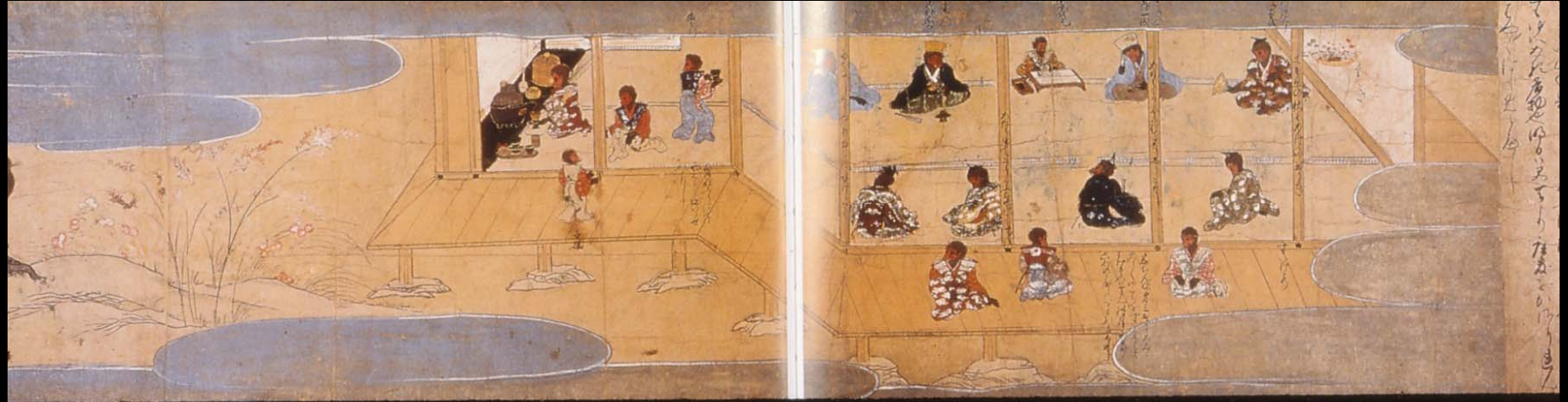
Bronze ewer.  
13<sup>th</sup> - 14<sup>th</sup> century.  
Private Collection,  
Japan.



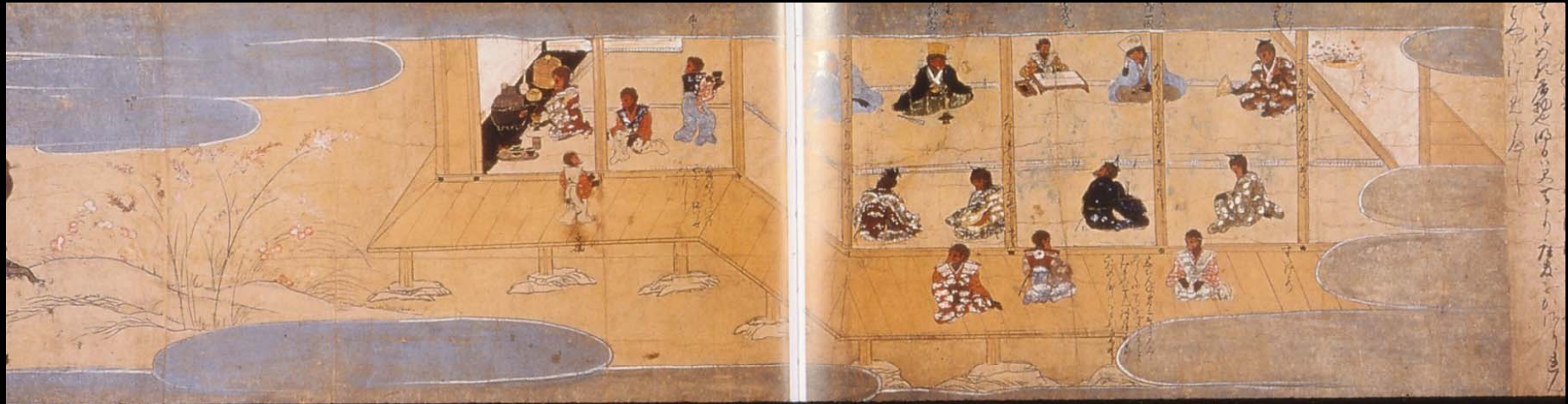
Bronze crane and  
tortoise candle  
stand.  
Muromachi period.  
15<sup>th</sup> – 16<sup>th</sup> Century.











Illustrated Tale of the Monkeys, "Saru no soshi")  
Muromachi period c. 1560 –70.  
Handscroll. British Museum.



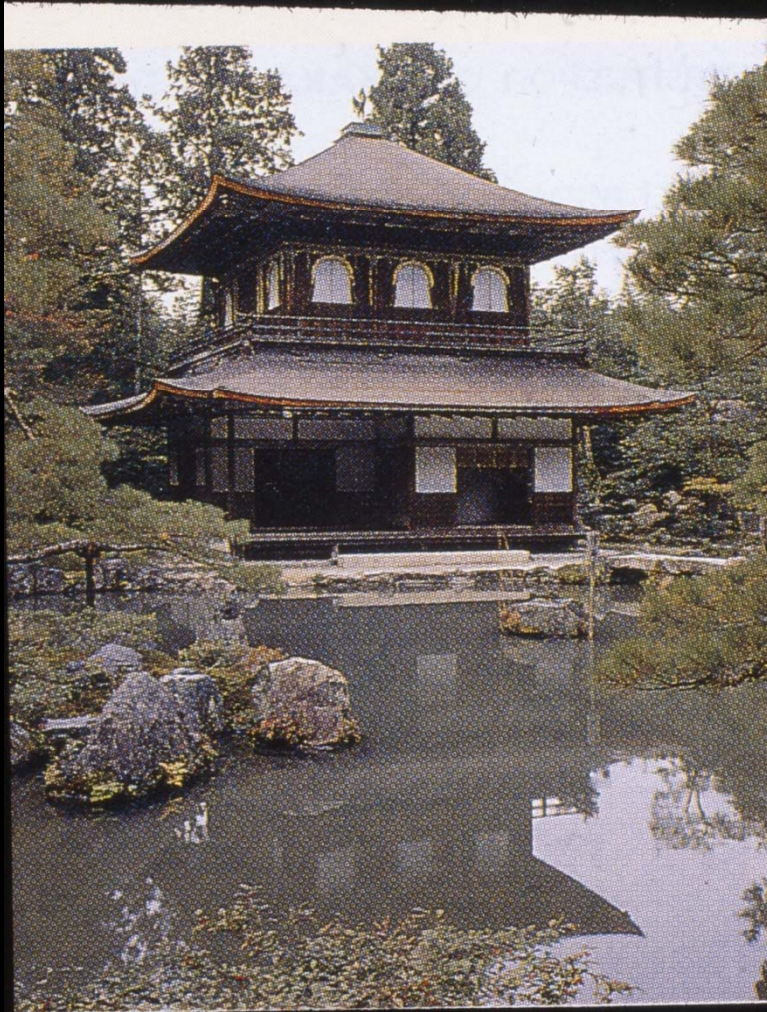
Tea bowl with indented lip and brown hare's fur marking 12<sup>th</sup> century, China.  
(Top left)

Chinese Chien (Temmoku) teabowl with lacquer & mother of pearl stand (Bottom right)





Kinkakuji –  
'The Golden Pavillion',  
Kyoto.  
c. 1397



Ginkakuji  
(The Silver Pavilion)  
circa. 1482, Kyoto

